

Statistics

Spring 2023

Lecture 4



Feb 19-8:47 AM

Collecting data, organize, and graph. (SG 3 & 4)

I randomly selected 20 exams, and here are the scores:

58 60 62 68 70
 70 73 75 75 75
 78 82 84 84 88
 90 95 98 100 100

1) Sample Size $n = 20$

2) Range = Max. - Min.
 $= 100 - 58 = 42$

3) Midrange = $\frac{\text{Max.} + \text{Min.}}{2} = \frac{100 + 58}{2} = \frac{158}{2} = 79$

4) Mode = 75

we wish to organize this sample into a frequency table with 4 classes.

class width = $\frac{\text{Range}}{\# \text{ of classes}}$

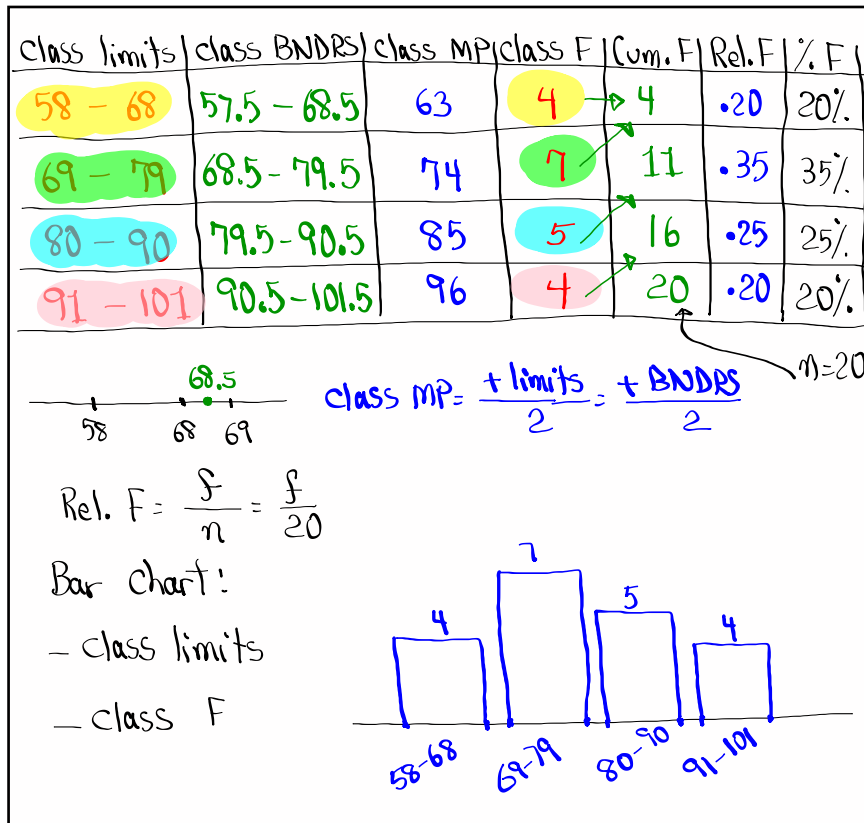
class width = $\frac{42}{4} = 10.5$

IS decimal \Rightarrow Round-up

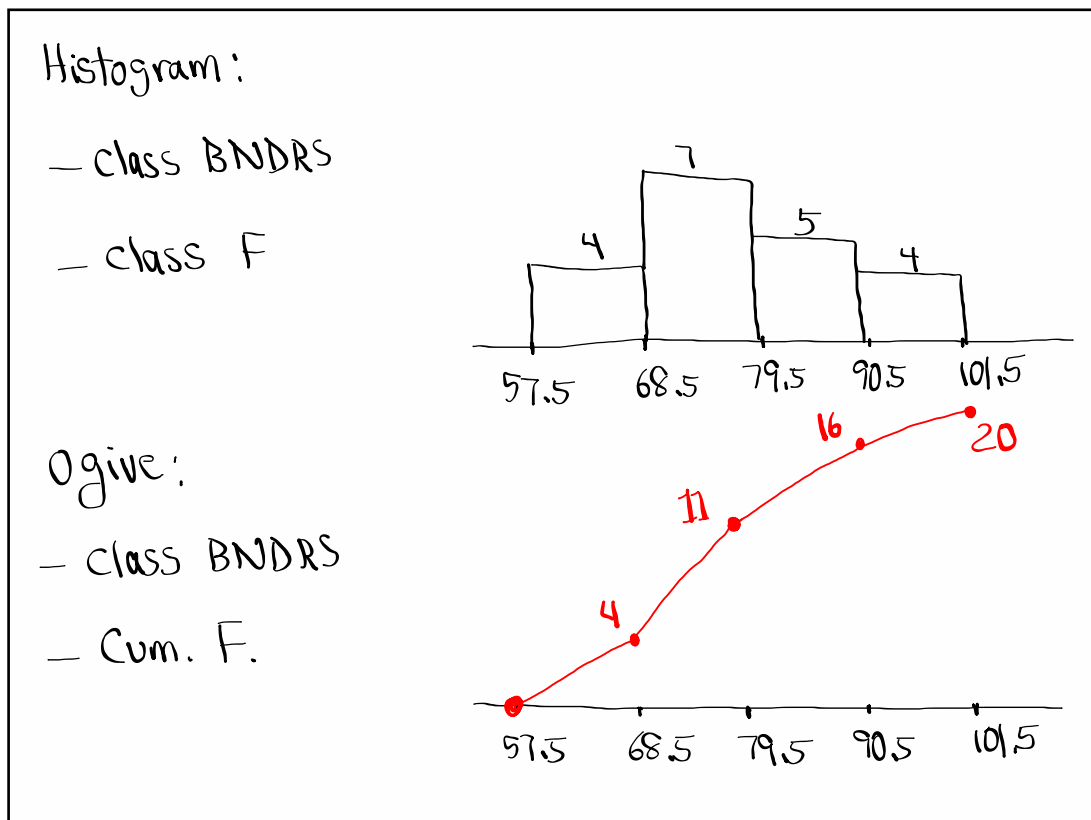
IS whole # \Rightarrow Add 1

CW = 11

Feb 9-7:19 AM



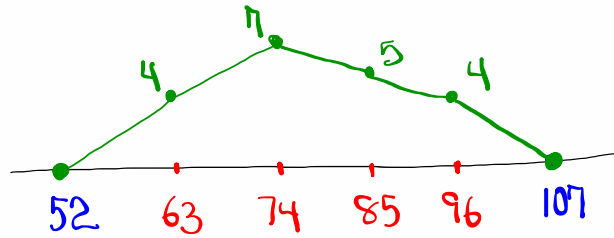
Feb 9-7:28 AM



Feb 9-7:44 AM

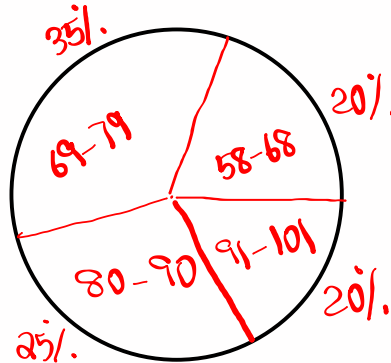
Freq. Polygon

- class MP ✓
- extra MP on each side
- class F



Pie Chart

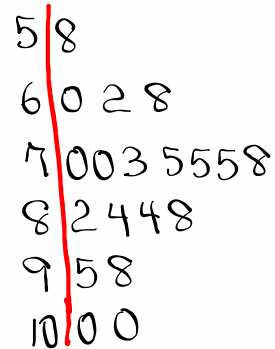
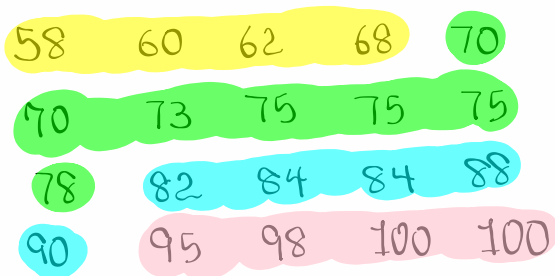
- class limits
- % F
- Circle



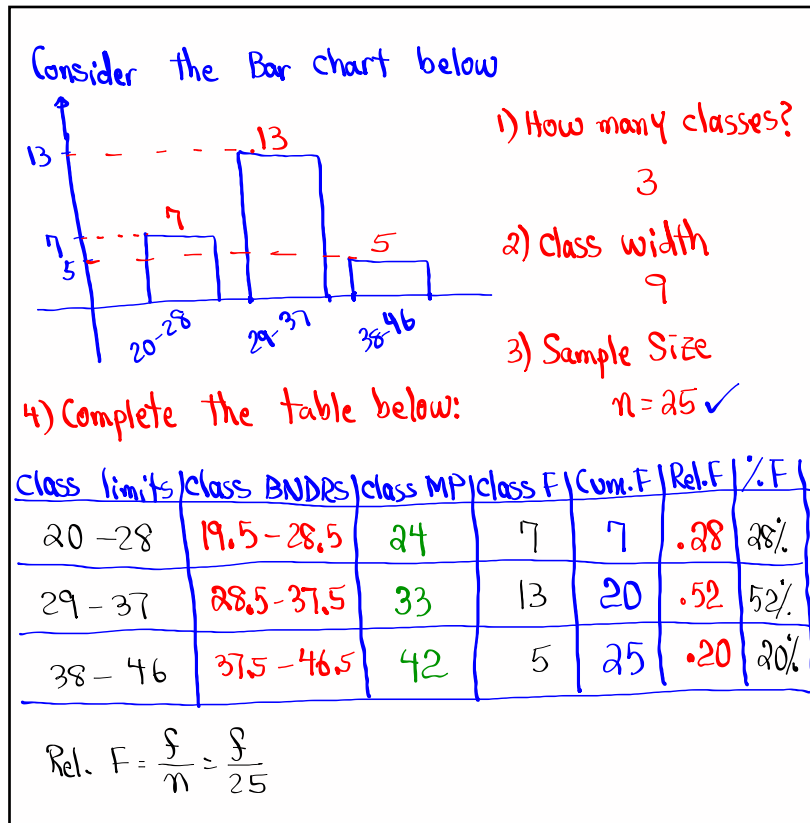
Feb 9-7:48 AM

STEM Plot

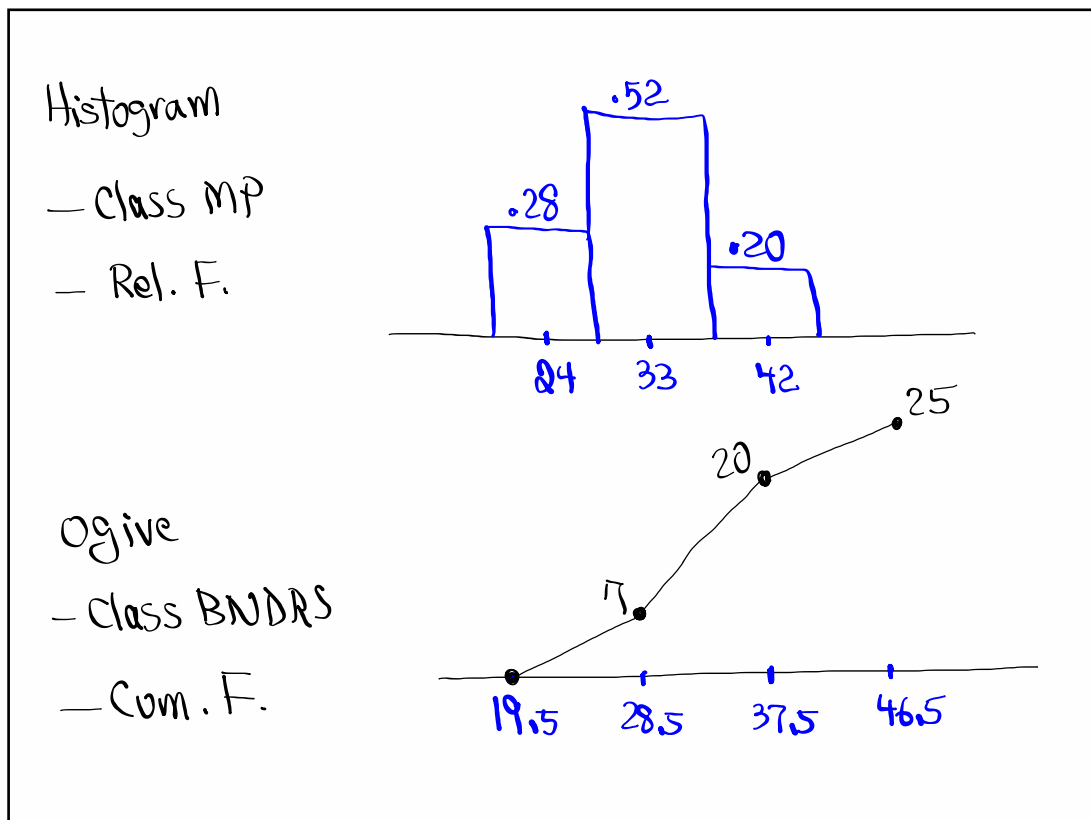
(Data must be Sorted)



Feb 9-7:54 AM



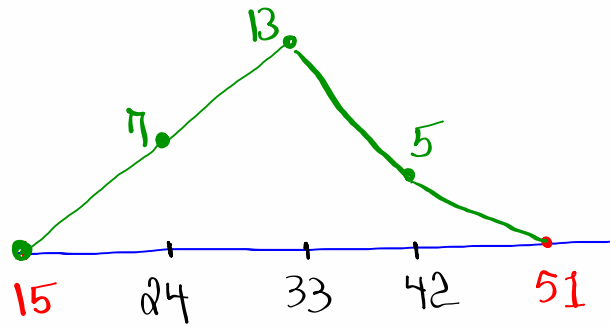
Feb 9-8:01 AM



Feb 9-8:11 AM

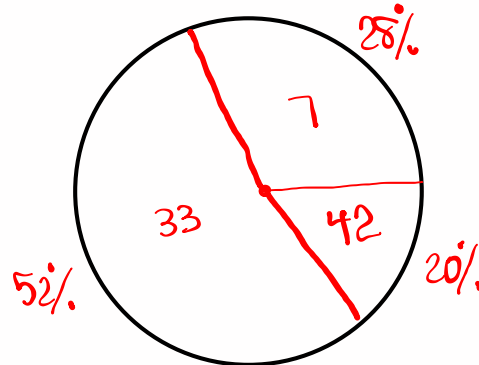
Freq. Polygon

- class MP
- extra MP on each side
- class F



Pie chart

- Circle
- class MP
- % F



Feb 9-8:14 AM